



Cordless LED Flashlight DML806



360 degrees illumination



Three-stage brightness switch



3-stage brightness switch



ON: full brightness with 20 LEDs (5 LEDs for 4 sides)

ON: half brightness with 10 LEDs (5 LEDs for 2 sides)

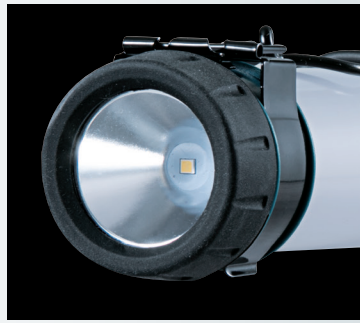
ON: Top LED (x1)

Convenient metal hook
 • can be retracted and stored behind the light head.
 • swivels full 360 degrees

Light diffusing plastic (color: milky white)



1W LED on the top with light-diffusing reflector and transparent lens



3-stage brightness switch

Ergonomically designed handle with soft grip



Light source		
Type	Illuminance (lx)*	Luminous flux (lm)
20 LEDs	310	620
10 LEDs	280	310
1W LED	2,100	90

*Measured in the center point of an illuminated field; 50cm from the light source

Cordless LED Flashlight

DML806 18V, 14.4V

18V LITHIUM ION	Continuous use (hours)	Main: 20LEDs-11.0(5.0Ah-18V)/6.5(4.0Ah-14.4V), 10LEDs-21(5.0Ah-18V)/12.5(4.0Ah-14.4V), Sub: 1 X 1W LED -59.0(5.0Ah-18V)/38.0(4.0Ah-14.4V)
	Dimensions (L x W x H)	365x78x119mm (BL1830) (14-3/8"x3-1/16"x4-11/16")
14.4V LITHIUM ION	Net weight*	0.69kg (1.5lbs) (BL1415N)

Battery and charger are sold separately. *weight according to EPTA-Procedure 01/2003
 Items of standard equipment and specifications may vary by country or area.

Continuous use

	BL1815N	BL1820	BL1830	BL1840	BL1850	BL1415N	BL1430	BL1440
20 LEDs	3.0h	4.0h	6.0h	8.5h	11.0h	2.5h	4.0h	6.5h
10 LEDs	6.0h	8.5h	11.5h	16.5h	21.0h	4.5h	8.0h	12.5h
1W LED	17.0h	23.0h	33.0h	46.0h	59.0h	14.5h	24.0h	38.0h
Charging time	15min	24min	22min	36min	45min	15min	22min	36min
	DC18RC 							

Makita Corporation

3-11-8 Sumiyoshi-cho, Anjo, Aichi, 446-8502 Japan

PRINTED IN JAPAN BF-AE