



# Cordless Hedge Trimmer

**UH013G** 600 mm (23-5/8")

**UH014G** 750 mm (29-1/2")



# 40V Li-ion max

## Same level performance as petrol hedge trimmer.



### UH013G

Blade Length:  
600 mm (23-5/8")



### UH014G

Blade Length:  
750 mm (29-1/2")



#### Light weight

UH013G UH014G

**4.2 / 4.3 kg**

battery: BL4024 (2.5Ah)

#### Cutting strokes per minute

**5,000 min<sup>-1</sup>**

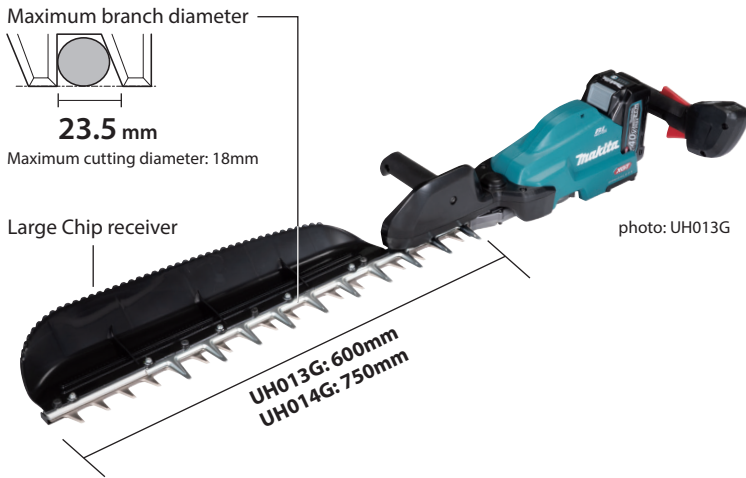
High speed mode

#### Low noise

**91 / 92 dB (A)**

UH013G / UH014G

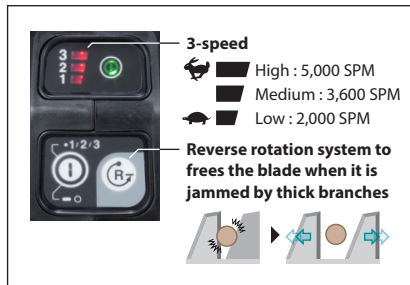




**BL MOTOR**  
High power  
Brushless motor

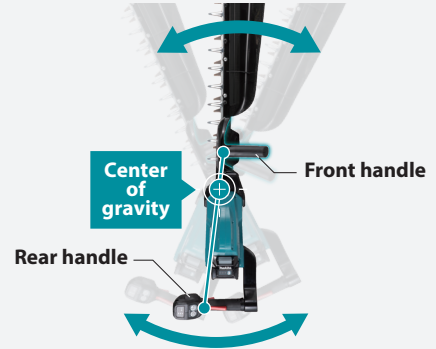


**XPT**  
eXtreme Protection  
Technology



**Easy-to-use Front handle**

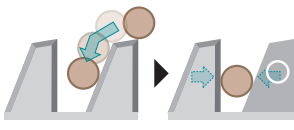
- Redesigned the gripping position of Front handle and place the center of gravity on the line connecting Front handle and Rear handle to reduce the force applied in the direction of twisting the wrist.



- Due to the inclination of Front handle end, it can be gripped when cutting the top surface, the angle at which the wrist is returned can be reduced, and wrist fatigue is reduced.

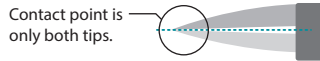


**Twigs are caught easily and held firmly**



**Optimum blade shape for smooth cutting**

- Sharp edge blades
- Upper blade: curving downward
- Lower blade: curving upward



**Anti-vibration structure**

consisting of Motor-crank section and handle section linked by cushions to absorb vibration from blade and motor-crank section



**Accessories**

**Shear blade**

Part No. 191Y03-6  
model: UH013G / size: 600mm



Part No. 191Y05-2  
model: UH014G / size: 750mm



**Chip receiver assembly set**

Part No. 191D33-1  
model: UH013G



Part No. 191D34-9  
model: UH014G



**Grease vessel set**

Part No. 199450-5

**Charging Time**

Battery	Fast Charging	
	DC40RA	DC40RC
*1BL4020 2.0Ah	22 min	30 min
*1BL4025 2.5Ah	28 min	38 min
*1BL4040 4.0Ah	45 min	67 min
BL4050F 5.0Ah	50 min	85 min

\*1 Recommended battery

**Cordless Hedge Trimmer**

**UH013G 600 mm (23-5/8") UH014G 750 mm (29-1/2")**

	UH013G	UH014G
Brake	Blade Length 600 mm (23-5/8") Tooth Spacing 35 mm (1-3/8")	750 mm (29-1/2") 35 mm (1-3/8")
Reversing	Max Branch Capacity 23.5 mm (15/16") Max Cutting Capacity 18 mm (11/16")	23.5 mm (15/16") 18 mm (11/16")
Electronic 3-Speed	Strokes Per Minute (SPM) High / Med / Low: 5,000 / 3,600 / 2,000 Continuous Use (min.) 85 / 160 / 390	High / Med / Low: 5,000 / 3,600 / 2,000 80 / 155 / 380
Constant Speed	Sound Pressure Level 80 dB(A) Sound Power Level 91 dB(A)	81 dB(A) 92 dB(A)
Anti Vibration	Vibration Level Front Grip 2.5 m/s <sup>2</sup> Dimensions (L x W x H) w/ BL4020 / BL4025: 1,085 x 270 x 135 mm (42-3/4 x 10-5/8 x 5-5/16")	3.2 m/s <sup>2</sup> w/ BL4020 / BL4025: 1,225 x 270 x 135 mm (48-1/4 x 10-5/8 x 5-5/16")
	Net weight 3.9 - 4.5 kg (8.6 - 9.9 lbs.)	4.0 - 4.7 kg (8.8 - 10.4 lbs.)

Standard Equipment : Blade Cover, Safety Goggles (country-specific), Chip Receiver (country-specific), Battery, Charger

The weight may differ depending on the attachment(s), including the battery cartridge. The lightest and heaviest combination, according to EPTA-Procedure 01/2014, are shown in the table. Items of standard equipment and specifications may vary by country or area.

**Makita Corporation**

3-11-8 Sumiyoshi-cho, Anjo, Aichi, 446-8502 Japan

PRINTED IN JAPAN 202112