



Cordless Impact Wrench
TW004G / TW005G 1/2" (12.7 mm)

Optimum power supply system and Optimum charging system

The XGT range of tools and batteries come with a built-in program, providing digital communication between the battery and tool. Allowing not only for the battery to talk with tool but also the tool to talk to the battery. Battery technology and motor engineering that work together for optimum performance.



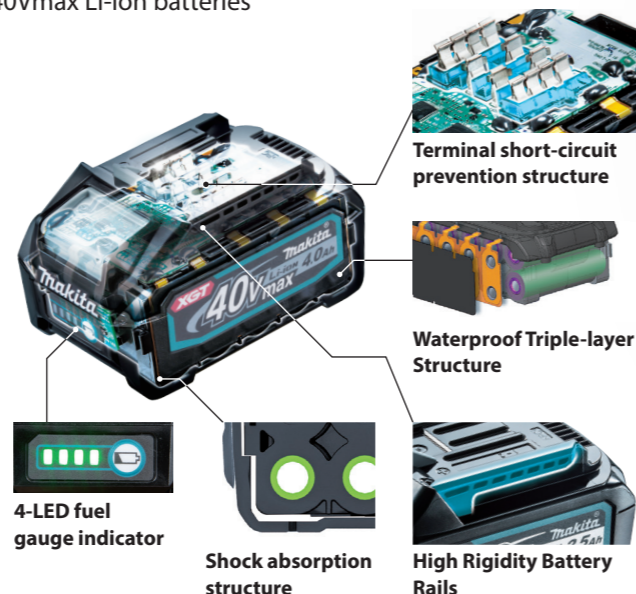
Optimum charging system

Auto maintenance system with two cooling fans for providing more optimum fast charging

Tool ↔ Battery ↔ Battery Charger
Digital communication

Built Tough

High durability specifications specially designed for 40Vmax Li-Ion batteries



40Vmax Li-ion Battery

BL4025
2.5Ah



BL4040
4.0Ah



40Vmax Fast Charger

DC40RA



The enlarged and raised LED light provides clearer indication of charging status.

Interchangeable Adapter

ADP10



Compatible with LXT Li-Ion batteries

Accessories

Tool hanger set
Part No. 191F58-7

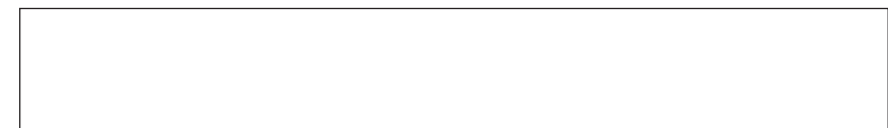


Charging Time Reference

Fast Charging	DC40RA	
		28min
		45min

Cordless Impact Wrench	
TW004G / TW005G 1/2" (12.7 mm)	
	Variable Speed
	Brake
	Reversing
	Electronic 4-Speed
	Constant Speed
	Built-in Job Light
	Carrying Case
Fastening Capacities	Standard Bolt: M10 - M20 (3/8" - 3/4") High Strength Bolt: M10 - M16 (3/8" - 5/8") 12.7 mm (1/2")
Square Drive	12.7 mm (1/2")
No Load Speed (RPM)	Max / Hard / Mid / Soft: 0 - 3,200 / 2,600 / 1,800 / 1,000
Impacts Per Minute (IPM)	Max / Hard / Mid / Soft: 0 - 4,000 / 3,400 / 2,600 / 1,800
Max Fastening Torque	350 N·m (260 ft.lbs.)
Nut-Busting Torque	630 N·m (465 ft.lbs.)
Vibration Level	Impact tightening of fasteners of the maximum capacity of the tool: 16.5 m/s ²
Sound Pressure Level	99 dB(A)
Sound Power Level	110 dB(A)
Dimensions (L x W x H)	w/ BL4025: 144x86x248 mm (5-5/8"x3-3/8"x9-3/4") w/ BL4040: 144x86x253 mm (5-5/8"x3-3/8"x10")
Net weight	1.9 - 2.2 kg (4.2 - 4.9 lbs.)
Standard Equipment: Belt Clip, Battery, Charger	

The weight may differ depending on the attachment(s), including the battery cartridge. The lightest and heaviest combination, according to EPTA-Procedure 01/2014, are shown in the table. Items of standard equipment and specifications may vary by country or area.



Makita Corporation

3-11-8 Sumiyoshi-cho, Anjo, Aichi, 446-8502 Japan

PRINTED IN JAPAN 202009



40V Li-ion max

Max fastening torque
350 N·m

Compact yet with Increased max fastening torque

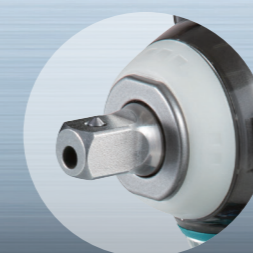
TW004G

C ring



TW005G

Pin detent



40Vmax series movie

This movie was filmed in Japan.
Models and specs may vary by country.



XGT
40V Li-Ion
max

Powered by
40Vmax XGT Li-Ion
battery

Increased max fastening torque



BL
MOTOR

Max fastening torque
350
N·m

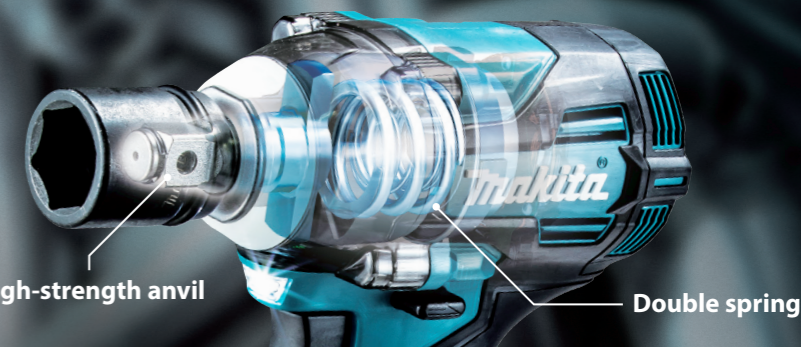
Nut-busting torque
630
N·m

*1 Fastening torque at 6 seconds after seating, when tightening M16 (grade F10T) high strength friction grip bolt in 4 (Max) mode



Compact and High Torque

Compact design with a short overall length of 144mm



High-strength anvil

Double spring

Excellent performance in continuous heavy operation due to Optimum power supply system

Number of bolts consecutively tightened under heavy load*2
approx

560
bolts

Able to use 2 batteries consecutively



*2 Continuous tightening of M16 bolts in an environment with a temperature at 40 °C / using two BL4025 batteries

Auto-stop system available both in forward / reverse rotation modes

3 modes of reaction time for automatic stop available both in forward and reverse rotation modes.



	Forward	Reverse
mode 1	The tool stops automatically as soon as it has detected the first impact blow.	The tool stops automatically as soon as it has stopped impact blow.
mode 2	The tool stops automatically approximately 0.5 seconds after the moment it has detected the first impact blow.	The tool stops automatically approximately 0.2 seconds after the moment it has stopped impact blow.
mode 3	The tool stops automatically approximately 1.0 second after the moment it has detected the first impact blow.	The tool automatically slows down to 300min ⁻¹ after the moment it has stopped impact blow.

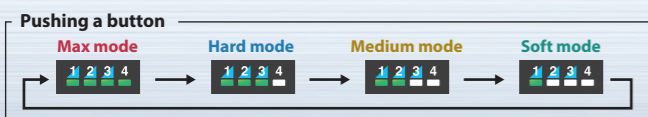
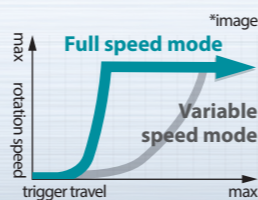
Electronic 4 stage impact power selection

Both in forward and reverse rotation modes, max / hard / medium / soft impact power can be selected to suit the material of workpiece or screw type simply by pushing a button.



Trigger switch with full speed mode

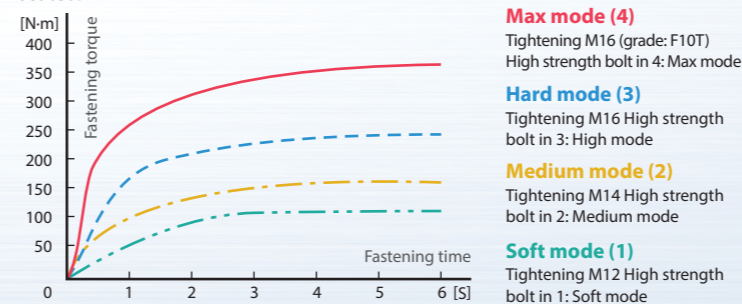
- Variable speed mode can be changed to full speed mode simply by pushing a button.
- Because in full speed mode, the trigger travel is shorter than in variable speed mode, the full speed is quickly reached, reducing hand and finger fatigue from trigger pull.



Full speed mode lamp

Relation Between Fastening torque and Fastening time when tightening each size of bolt in each Fastening torque mode with a fully charged battery.

The time axis on the charts below indicates the fastening time after the bolt is seated.



Max mode (4)
Tightening M16 (grade: F10T)
High strength bolt in 4: Max mode

Hard mode (3)
Tightening M16 High strength
bolt in 3: High mode

Medium mode (2)
Tightening M14 High strength
bolt in 2: Medium mode

Soft mode (1)
Tightening M12 High strength
bolt in 1: Soft mode

No load speed (min⁻¹)

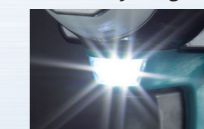
Max mode (4): 0 - 3,200
Hard mode (3): 0 - 2,600
Medium mode (2): 0 - 1,800
Soft mode (1): 0 - 1,000

Impacts per minutes (min⁻¹)

Max mode (4): 0 - 4,000
Hard mode (3): 0 - 3,400
Medium mode (2): 0 - 2,600
Soft mode (1): 0 - 1,800

Constant speed control
reduces the torque drop
when remaining battery
capacity gets low.

Twin LED job light



Variable speed control
by trigger

XPT

