

**Slide Switch Type**



	<b>GA021G</b> (BRAND)	<b>GA022G</b> (BRAND)	<b>GA023G</b> (BRAND)
Wheel Diameter	100 mm (4")	115 mm (4-1/2")	125 mm (5")
Hole Diameter	16 mm (5/8")	22.23 mm (7/8")	22.23 mm (7/8")
No Load Speed (RPM)	3,000 - 8,500	3,000 - 8,500	3,000 - 8,500
Vibration Level	5.0 m/s <sup>2</sup>	5.5 m/s <sup>2</sup>	6.5 m/s <sup>2</sup>
Sound Pressure Level / Sound Power Level	81 dB(A) / 92 dB(A)	81 dB(A) / 92 dB(A)	81 dB(A) / 92 dB(A)
Dimensions (L x W x H) with / BL4025:	413x117x150 mm (16-1/4"x4-5/8"x5-7/8")	413x130x156 mm (16-1/4"x5-1/8"x6-1/8")	413x140x156 mm (16-1/4"x5-1/2"x6-1/8")
Dimensions (L x W x H) with / BL4040:	425x117x162 mm (16-3/4"x4-5/8"x6-3/8")	425x130x168 mm (16-3/4"x5-1/8"x6-5/8")	425x140x168 mm (16-3/4"x5-1/2"x6-5/8")
Net weight	2.8 - 3.4 kg (6.2 - 7.5 lbs.)	3.0 - 3.6 kg (6.6 - 7.9 lbs.)	3.0 - 4.4 kg (6.6 - 9.7 lbs.)

	<b>GA024G</b>	<b>GA025G</b>	<b>GA026G</b>
Wheel Diameter	100 mm (4")	115 mm (4-1/2")	125 mm (5")
Hole Diameter	16 mm (5/8")	22.23 mm (7/8")	22.23 mm (7/8")
No Load Speed (RPM)	3,000 - 8,500	3,000 - 8,500	3,000 - 8,500
Vibration Level	5.0 m/s <sup>2</sup>	5.5 m/s <sup>2</sup>	6.5 m/s <sup>2</sup>
Sound Pressure Level / Sound Power Level	81 dB(A) / 92 dB(A)	81 dB(A) / 92 dB(A)	81 dB(A) / 92 dB(A)
Dimensions (L x W x H) with / BL4025:	413x117x146 mm (16-1/4"x4-5/8"x5-3/4")	413x130x152 mm (16-1/4"x5-1/8"x6")	413x140x152 mm (16-1/4"x5-1/2"x6")
Dimensions (L x W x H) with / BL4040:	425x117x158 mm (16-3/4"x4-5/8"x6-1/4")	425x130x165 mm (16-3/4"x5-1/8"x6-1/2")	425x140x165 mm (16-3/4"x5-1/2"x6-1/2")
Net weight	2.8 - 3.4 kg (6.2 - 7.5 lbs.)	2.9 - 3.5 kg (6.4 - 7.7 lbs.)	2.9 - 4.4 kg (6.4 - 9.7 lbs.)

Variable Speed Brake Soft Start Dust Collection Carrying Case  
▲ GA021G, GA022G, GA023G

Standard equipment : Grinding Wheel, Toolless Wheel Cover, Side Grip, Lock Nut Wrench, Battery, Charger

**Paddle Switch Type**



	<b>GA027G</b> (BRAND)	<b>GA028G</b> (BRAND)	<b>GA029G</b> (BRAND)
Wheel Diameter	100 mm (4")	115 mm (4-1/2")	125 mm (5")
Hole Diameter	16 mm (5/8")	22.23 mm (7/8")	22.23 mm (7/8")
No Load Speed (RPM)	3,000 - 8,500	3,000 - 8,500	3,000 - 8,500
Vibration Level	4.5 m/s <sup>2</sup>	5.0 m/s <sup>2</sup>	6.0 m/s <sup>2</sup>
Sound Pressure Level / Sound Power Level	81 dB(A) / 92 dB(A)	81 dB(A) / 92 dB(A)	82 dB(A) / 93 dB(A)
Dimensions (L x W x H) with / BL4025:	413x117x150 mm (16-1/4"x4-5/8"x5-7/8")	413x130x156 mm (16-1/4"x5-1/8"x6-1/8")	413x140x156 mm (16-1/4"x5-1/2"x6-1/8")
Dimensions (L x W x H) with / BL4040:	425x117x162 mm (16-3/4"x4-5/8"x6-3/8")	425x130x168 mm (16-3/4"x5-1/8"x6-5/8")	425x140x168 mm (16-3/4"x5-1/2"x6-5/8")
Net weight	2.9 - 3.4 kg (6.4 - 7.5 lbs.)	3.0 - 3.6 kg (6.6 - 7.9 lbs.)	3.0 - 4.5 kg (6.6 - 9.9 lbs.)

	<b>GA030G</b>	<b>GA031G</b>	<b>GA032G</b>
Wheel Diameter	100 mm (4")	115 mm (4-1/2")	125 mm (5")
Hole Diameter	16 mm (5/8")	22.23 mm (7/8")	22.23 mm (7/8")
No Load Speed (RPM)	3,000 - 8,500	3,000 - 8,500	3,000 - 8,500
Vibration Level	4.5 m/s <sup>2</sup>	5.0 m/s <sup>2</sup>	6.0 m/s <sup>2</sup>
Sound Pressure Level / Sound Power Level	81 dB(A) / 92 dB(A)	81 dB(A) / 92 dB(A)	82 dB(A) / 93 dB(A)
Dimensions (L x W x H) with / BL4025:	413x117x146 mm (16-1/4"x4-5/8"x5-3/4")	413x130x152 mm (16-1/4"x5-1/8"x6")	413x140x152 mm (16-1/4"x5-1/2"x6")
Dimensions (L x W x H) with / BL4040:	425x117x158 mm (16-3/4"x4-5/8"x6-1/4")	425x130x165 mm (16-3/4"x5-1/8"x6-1/2")	425x140x165 mm (16-3/4"x5-1/2"x6-1/2")
Net weight	2.8 - 3.4 kg (6.2 - 7.5 lbs.)	2.9 - 3.6 kg (6.4 - 7.9 lbs.)	3.0 - 4.4 kg (6.6 - 9.7 lbs.)

Variable Speed Brake Soft Start Dust Collection Carrying Case  
▲ GA027G, GA028G, GA029G

Standard equipment : Grinding Wheel, Toolless Wheel Cover, Side Grip, Lock Nut Wrench, Battery, Charger

**Product Comparison List**

Model No.			No load speed (rpm)	Switch	AWS	BL motor	AFT	Brake	XPT	Anti-restart function
100mm	115mm	125mm								
<b>GA021G NEW</b>	<b>GA022G NEW</b>	<b>GA023G NEW</b>	3,000 - 8,500	Slide	●	●	●	●	●	●
<b>GA024G NEW</b>	<b>GA025G NEW</b>	<b>GA026G NEW</b>	3,000 - 8,500	Slide	●	●	●	●	●	●
<b>GA003G</b>	<b>GA004G</b>	<b>GA005G</b>	8,500	Slide	●	●	●	●	●	●
<b>GA006G</b>	<b>GA007G</b>	<b>GA008G</b>	8,500	Slide	●	●	●	●	●	●
<b>GA027G NEW</b>	<b>GA028G NEW</b>	<b>GA029G NEW</b>	3,000 - 8,500	Paddle	●	●	●	●	●	●
<b>GA030G NEW</b>	<b>GA031G NEW</b>	<b>GA032G NEW</b>	3,000 - 8,500	Paddle	●	●	●	●	●	●
<b>GA011G</b>	<b>GA012G</b>	<b>GA013G</b>	8,500	Paddle	●	●	●	●	●	●
<b>GA014G</b>	<b>GA015G</b>	<b>GA016G</b>	8,500	Paddle	●	●	●	●	●	●

The weight may differ depending on the attachment(s), including the battery cartridge. The lightest and heaviest combination, according to EPTA-Procedure 01/2014, are shown in the table.

Items of standard equipment and specifications may vary by country or area.

**Makita Corporation**

3-11-8 Sumiyoshi-cho, Anjo, Aichi, 446-8502 Japan

PRINTED IN JAPAN 202005

**XGT**  
**40V Li-ion max**

**Delivers the same power as 1,000W corded grinders**



**AWS** **BL MOTOR** **(BRAKE)**  
**AFT** **XPT** GA021G, GA022G, GA023G, GA027G, GA028G, GA029G,

**XGT**  
**40V<sup>Li-ion</sup>max**

**Switch on the tool**



**Vacuum cleaner is activated**

**AWS**  
Auto-start Wireless System

The wireless activation function enables clean and comfortable operation. By connecting a supported tool to the cleaner, you can run the cleaner automatically along with the switch operation of the tool.



about **40% UP**

**Cutting speed**  
Cutting depth: 20mm (concrete)

<b>GA021G</b>	<b>140</b>
18V Predecessor Model	100

Slow Fast

**Work amount on a full battery charge<sup>\*1</sup>**  
Battery: BL4040

about **7m**  
Cutting depth: 20mm

<sup>\*1</sup>The test results depend to a great extent on the test material etc.



**Variable speed control dial (3,000 - 8,500 RPM)**

Matches the speed to your application.

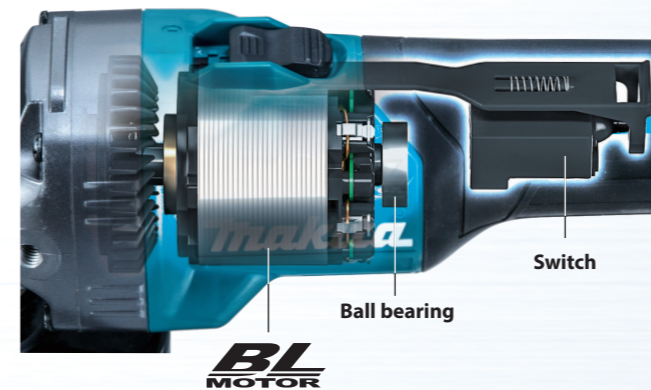


	No load speed (RPM)	Cutting / Rough grinding	Grinding / Finish grinding	Rust removal / Paint removal	Stainless steel polishing
1	3,000				✓
2	4,500			✓	✓
3	6,000		✓	✓	✓
4	7,500		✓		
5	8,500	✓			



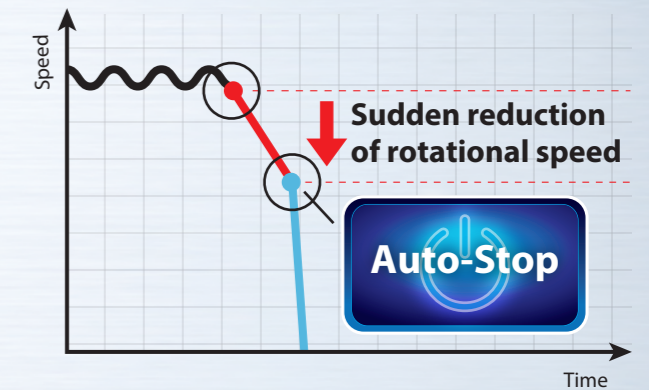
**High durability**

- Largest ball bearing supports the motor.
- New switch design to reduce contact weariness.



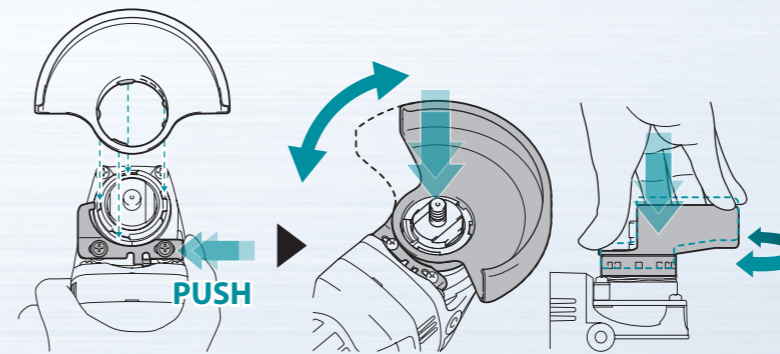
**AFT Active Feedback sensing Technology**

Shuts down the tool, if the rotation speed suddenly slows down.



**New toolless wheel cover (Slide lever style)**

allows for fast and easy angle adjustment and installation / removal of wheel cover.



**Electric brake**  
maximizes productivity and increases safety for operator  
(GA021G/GA022G/GA023G/GA027G/GA028G/GA029G)



**Extreme Protection Technology**  
is engineered for improved dust and water resistance



**Accessories**

**Dust collection wheel guard**

for offset diamond wheel for diamond wheel

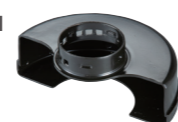


Part No.	Size	Type
191F81-2	125mm	for offset diamond wheel
191G06-2	125mm	for diamond wheel



**Wheel cover**

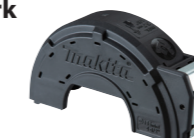
for cut-off wheel



Part No.	Size
162555-4	100mm
162556-2	115mm
162557-0/140N45-1	125mm

**Cutting Wheel Cover Attachment for cutting work**

can be attached to the wheel cover for grinding with easy assembling.



Part No.	Size
199709-0	115mm
199710-5	125mm



**Vibration proof grip set**



Part No. 194514-0