

**Accessories**

**Dust Collection wheel guard**

for Diamond wheel  
GA041G, GA044G,  
GA047G only

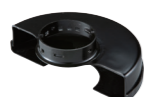
Part No.  
191G05-4



**Wheel cover**

for abrasive cut-off  
wheel

Size Part No.  
100mm 162706-9  
115mm 162707-7  
125mm 162708-5



**Cutting W.C.A set**  
for abrasive cut-off  
wheel

Size Part No.  
100mm 191V54-1  
115mm 199709-0  
125mm 199710-5



**Anti-vibration grip**

Part No.  
194514-0



**Charging Time**

	Part No.	Fast Charging	
		DC40RA	DC40RC
BL4020 2.0Ah		22 min	30 min
*1 BL4025 2.5Ah		28 min	38 min
*1 BL4040 4.0Ah		45 min	67 min
*1 BL4050F 5.0Ah		50 min	85 min
BL4080F 8.0Ah		76 min	170 min

\*1 Recommended battery

**X-LOCK wheels**

**Grinding wheel / Metal**

Size Part No.  
100mm E-00480  
115mm E-00365  
125mm E-00393



**Grinding wheel / Stainless**

Size Part No.  
100mm E-00496  
115mm E-00371  
125mm E-00402



**Thin Cut-off wheel / Stainless (Flat)**

Size Part No.  
100mm E-00505  
115mm E-00387  
125mm E-00418



**Diamond wheel / Concrete**

Size Part No.  
100mm E-02054  
115mm E-02060  
125mm E-02076



**Slide Switch Type**

**BL** **AWS** **AFT** **X-LOCK** **XPT**

	GA039G	GA040G	GA041G
Wheel Diameter	100 mm (4")	115 mm (4-1/2")	125 mm (5")
Thread	X-Lock	X-Lock	X-Lock
No Load Speed (RPM)	3,000 - 8,500	3,000 - 8,500	3,000 - 8,500
Vibration Level Surface Grinding w/ Normal Side Grip:	3.0 m/s <sup>2</sup>	3.4 m/s <sup>2</sup>	4.2 m/s <sup>2</sup>
Disc Sanding w/ Normal Side Grip:	2.5 m/s <sup>2</sup> or less	2.5 m/s <sup>2</sup> or less	2.5 m/s <sup>2</sup>
Sound Pressure Level	79 dB(A)	80 dB(A)	80 dB(A)
Dimensions (L x W x H) with/BL4025:	421 x 117 x 149 mm (16-1/2 x 4-5/8 x 5-7/8")	421 x 130 x 151 mm (16-1/2 x 5-1/8 x 5-15/16")	421 x 140 x 151 mm (16-1/2 x 5-1/2 x 5-15/16")
with/BL4050F:	459 x 117 x 178 mm (18 x 4-5/8 x 7")	459 x 130 x 180 mm (18 x 5-1/8 x 7-1/8")	459 x 140 x 180 mm (18 x 5-1/2 x 7-1/8")
Net weight	3.0 - 5.3 kg (6.6 - 11.7 lbs.)	3.0 - 5.3 kg (6.6 - 11.7 lbs.)	3.0 - 5.3 kg (6.6 - 11.7 lbs.)

Variable Speed Brake Constant speed Soft Start Dust Collection Carrying Case

Standard equipment : Depressed Center Wheel, Cutting wheel cover attachment, Toolless Wheel Cover, Side grip, Battery, Charger

**Paddle Switch Type**

**BL** **AWS** **AFT** **X-LOCK** **XPT**

	GA042G	GA043G	GA044G
Wheel Diameter	100 mm (4")	115 mm (4-1/2")	125 mm (5")
Thread	X-Lock	X-Lock	X-Lock
No Load Speed (RPM)	3,000 - 8,500	3,000 - 8,500	22,233 mm (7/8") 3,000 - 8,500
Vibration Level Surface Grinding w/ Normal Side Grip:	3.3 m/s <sup>2</sup>	3.7 m/s <sup>2</sup>	4.5 m/s <sup>2</sup>
Disc Sanding w/ Normal Side Grip:	2.5 m/s <sup>2</sup> or less	2.5 m/s <sup>2</sup> or less	2.5 m/s <sup>2</sup> or less
Sound Pressure Level / Sound Power Level	81 dB(A) / 92 dB(A)	81 dB(A) / 92 dB(A)	81 dB(A) / 92 dB(A)
Dimensions (L x W x H) with/BL4025:	421 x 117 x 149 mm (16-1/2 x 4-5/8 x 5-7/8")	421 x 130 x 151 mm (16-1/2 x 5-1/8 x 5-15/16")	421 x 140 x 151 mm (16-1/2 x 5-1/2 x 5-15/16")
with/BL4050F:	459 x 117 x 178 mm (17-1/2 x 4-5/8 x 7")	459 x 130 x 180 mm (18 x 5-1/8 x 7-1/8")	459 x 140 x 180 mm (18 x 5-1/2 x 7-1/8")
Net weight	3.0 - 5.4 kg (6.6 - 11.9 lbs.)	3.0 - 5.4 kg (6.6 - 11.9 lbs.)	3.0 - 5.4 kg (6.6 - 11.9 lbs.)

**BL** **AFT** **X-LOCK** **XPT**

	GA045G	GA046G	GA047G
Wheel Diameter	100 mm (4")	115 mm (4-1/2")	125 mm (5")
Thread	X-Lock	X-Lock	X-Lock
No Load Speed (RPM)	8,500	8,500	8,500
Vibration Level Surface Grinding w/ Normal Side Grip:	3.3 m/s <sup>2</sup>	3.7 m/s <sup>2</sup>	4.5 m/s <sup>2</sup>
Disc Sanding w/ Normal Side Grip:	2.5 m/s <sup>2</sup> or less	2.5 m/s <sup>2</sup> or less	2.5 m/s <sup>2</sup> or less
Sound Pressure Level / Sound Power Level	81 dB(A) / 92 dB(A)	81 dB(A) / 92 dB(A)	81 dB(A) / 92 dB(A)
Dimensions (L x W x H) with/BL4025:	406 x 117 x 149 mm (16 x 4-5/8 x 5-7/8")	406 x 130 x 151 mm (16 x 5-1/8 x 5-15/16")	406 x 140 x 151 mm (16 x 5-1/2 x 5-15/16")
with/BL4050F:	444 x 117 x 178 mm (17-1/2 x 4-5/8 x 7")	444 x 130 x 180 mm (17-1/2 x 5-1/8 x 7-1/8")	444 x 140 x 180 mm (17-1/2 x 5-1/2 x 7-1/8")
Net weight	2.9 - 5.3 kg (6.4 - 11.7 lbs.)	3.0 - 5.3 kg (6.6 - 11.7 lbs.)	3.0 - 5.3 kg (6.6 - 11.7 lbs.)

Variable Speed Brake Constant speed Soft Start Dust Collection Carrying Case

▲ GA042G, GA043G, GA044G

Standard equipment : Depressed Center Wheel, Cutting wheel cover attachment, Toolless Wheel Cover, Side grip, Battery, Charger

The weight may differ depending on the attachment(s), including the battery cartridge. The lightest and heaviest combination, according to EPTA-Procedure 01/2014, are shown in the table. Items of standard equipment and specifications may vary by country or area.

**Makita Corporation**

3-11-8 Sumiyoshi-cho, Anjo, Aichi, 446-8502 Japan

PRINTED IN JAPAN 202205



**Just One Click**

**X-LOCK**

Quick and Effortless Wheel Change System



Slide Switch with Electric brake, AWS and Variable speed control by dial

**GA039G** 100mm  
**GA040G** 115mm  
**GA041G** 125mm



**AWS** **BL** **AFT** **BRAKE** **XPT**

Paddle Switch with Electric brake, AWS and Variable speed control by dial

**GA042G** 100mm  
**GA043G** 115mm  
**GA044G** 125mm



**AWS** **BL** **AFT** **BRAKE** **XPT**

Paddle Switch with Electric brake

**GA045G** 100mm  
**GA046G** 115mm  
**GA047G** 125mm



**BL** **AFT** **BRAKE** **XPT**

**BL MOTOR**

High operating efficiency

**XLOCK**

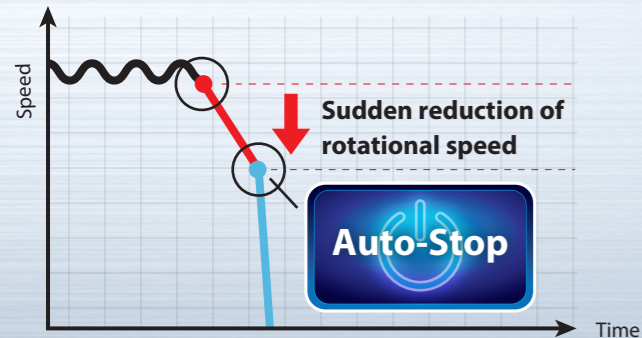
Quick and Effortless Wheel Change System



Just one click to attach the accessories  
easy removal just simply pull the lever

**AFT Active Feedback sensing Technology**

Shuts down the tool, if the rotation speed suddenly slows down.



**AWS Auto-start Wireless System**

connects to compatible vacuum cleaner with Bluetooth. The vacuum cleaner automatically runs while the switch is on.



**Toolless wheel cover (Slide lever style)**

allows for fast and easy angle adjustment and installation / removal of wheel cover.



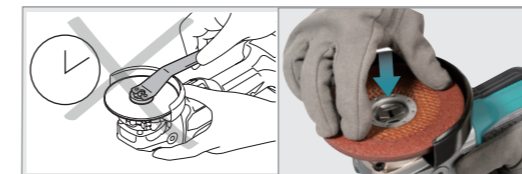
**No over-tightening**

X-LOCK accessories are firmly attached and cannot be mounted incorrectly.



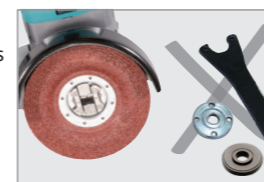
**No downtime**

of installing and removing the accessories. Improve your work efficiency and work environment



**No tool required**

X-LOCK mechanism ensures that the accessory is properly mounted to the tool even without nut, flange, and spanner.



**No scratching workpiece**

by nuts even when flat grinding.



**Constant speed control**

minimizes the reduction in wheel speed to provide stable grinding.

**Variable speed control dial (3,000 - 8,500 RPM)**

Matches the speed to your application.

GA039G, GA040G, GA041G, GA042G, GA043G, GA044G only

	No load speed (RPM)	Cutting / Rough grinding	Grinding / Finish grinding	Rust removal / Paint removal	Stainless steel polishing
1	3,000				✓
2	4,500			✓	✓
3	6,000		✓	✓	✓
4	7,500		✓		
5	8,500	✓			



**Electric brake**  
maximizes productivity and increases safety for operator



**Extreme Protection Technology**  
is engineered for improved dust and water resistance

