



Cordless Angle Grinder
DGA419 / DGA469 / DGA519
 100 mm (4") / 115 mm (4-1/2") / 125 mm (5")

Satisfy Professional's Needs

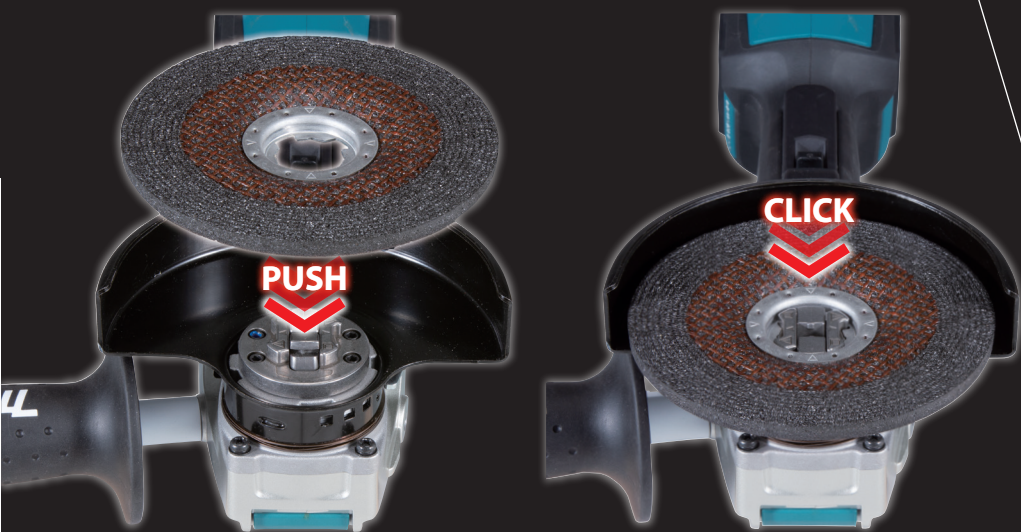


Just One Click

XLOCK Quick and Effortless Wheel Change System

Just Snap-in

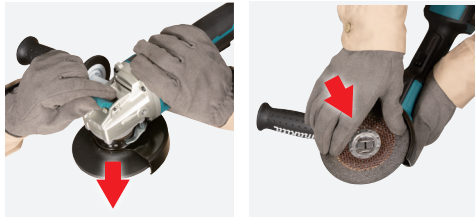
Just Pull It



ADT AFT BL MOTOR (BRAKE) XLOCK XPT

X-LOCK

JUST ONE CLICK TO ATTACH THE ACCESSORIES AND EASY REMOVAL JUST SIMPLY PULL THE LEVER

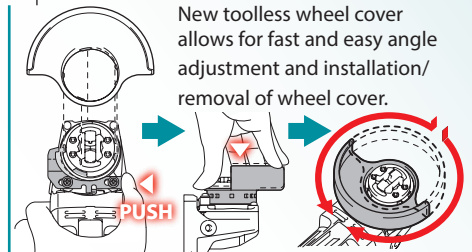
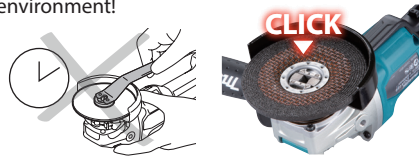


ADT AFT BL MOTOR
(BRAKE) XPT LXI

No need to worry about any losable parts. X-LOCK mechanism ensures that the accessory is properly mounted to the tool even without nut, flange, and spanner.



No need to worry about downtime of installing and removing the accessories. Improve your work efficiency and work environment!



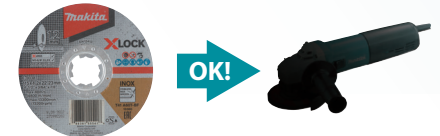
No need to worry about disturbing by nuts even when flat grinding.



No need to worry about over-tightening or lack of tightening of nut. X-LOCK accessories are firmly attached and cannot be mounted incorrectly.



115/ 125mm X-LOCK accessories are compatible with conventional angle grinders.



*100mm wheels are not compatible with conventional angle grinders.

Accessories

X-LOCK wheels

The following 4 wheel types are available in 3 diameters; 100mm (4"), 115mm (4-1/4") and 125mm (5"):

Grinding wheel / Metal

	100mm	E-00480(EN)
	115mm	E-00365(EN)
	125mm	E-00393(EN)

Thin Cut-off wheel (Flat)

	100mm	E-00505(EN)
	115mm	E-00387(EN)
	125mm	E-00418(EN)

Grinding wheel / Stainless

	100mm	E-00496(EN)
	115mm	E-00371(EN)
	125mm	E-00402(EN)

Diamond wheel / concrete

	100mm	E-02054
	115mm	E-02060
	125mm	E-02076

Dust Collection wheel guard

(for Model DGA519)
for Diamond wheel
Part No. 191G05-4



Anti-vibration grip

Part No. 194514-0
Part No. 162258-0



Wheel cover

for abrasive cut-off wheel

	100mm	162706-9
	115mm	162707-7
	125mm	162708-5



Cordless Angle Grinder	DGA419 100 mm (4")	DGA469 115 mm (4-1/2")	DGA519 125 mm (5")
Variable Speed	Wheel Diameter 100 mm (4")	Wheel Diameter 115 mm (4-1/2")	Wheel Diameter 125 mm (5")
Brake	Hole Diameter 22.23 mm (7/8")	Hole Diameter 22.23 mm (7/8")	Hole Diameter 22.23 mm (7/8")
Soft Start	No Load Speed (RPM) 3,000 - 8,500	No Load Speed (RPM) 3,000 - 8,500	No Load Speed (RPM) 3,000 - 8,500
Dust Collection	Circumference of Grip Portion 160 mm (6-5/16")	Circumference of Grip Portion 160 mm (6-5/16")	Circumference of Grip Portion 160 mm (6-5/16")
Carrying Case	Vibration Level Surface Grinding w/ Anti-Vibration Side Grip: 6.0 m/s ²	Vibration Level Surface Grinding w/ Anti-Vibration Side Grip: 5.5 m/s ²	Vibration Level Surface Grinding w/ Anti-Vibration Side Grip: 7.0 m/s ²
	Sound Pressure Level 80 dB(A)	Sound Pressure Level 80 dB(A)	Sound Pressure Level 80 dB(A)
	Dimensions (L x W x H) w/ BL1815N / BL1820B: 382x117x147 mm (15"x4-5/8"x5-3/4")	Dimensions (L x W x H) w/ BL1815N / BL1820B: 382x130x147 mm (15"x5-1/8"x5-3/4")	Dimensions (L x W x H) w/ BL1815N / BL1820B: 382x140x147 mm (15"x5-1/2"x5-3/4")
	w/ BL1830B / BL1840B / BL1850B / BL1860B: 396x117x147 mm (15-1/2"x4-5/8"x5-3/4")	w/ BL1830B / BL1840B / BL1850B / BL1860B: 396x130x147 mm (15-1/2"x5-1/8"x5-3/4")	w/ BL1830B / BL1840B / BL1850B / BL1860B: 396x140x147 mm (15-1/2"x5-1/2"x5-3/4")
	Net weight 2.4 - 3.0 kg (5.3 - 6.6 lbs.)	Net weight 2.5 - 3.1 kg (5.5 - 6.8 lbs.)	Net weight 2.5 - 3.1 kg (5.5 - 6.8 lbs.)
	Standard Equipment: Grinding Wheel, Wheel Cover, Side Grip, Battery, Charger		

The weight may differ depending on the attachment(s), including the battery cartridge. The lightest and heaviest combination, according to EPTA-Procedure 01/2014, are shown in the table. Items of standard equipment and specifications may vary by country or area.

Makita Corporation

3-11-8 Sumiyoshi-cho, Anjo, Aichi, 446-8502 Japan

PRINTED IN JAPAN 202001