



18v LXT® Lithium-Ion Brushless Cordless 5" Slide Switch  
Cut-Off/Angle Grinder, with Electric Brake  
Model DGA506Z (Bare tool)

BRUSHLESS WITH ELECTRIC BRAKE



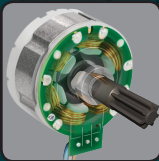
**PRODUCTIVITY**  
Electric Brake stops the grinding or cut-off wheel in 2 seconds or less for maximum productivity



**CONTROL**  
Electronic Torque Control turns the motor off if rotation speed suddenly slows or stops



**INNOVATION**  
Automatic Speed Change™ technology adjusts speed and torque during operation for optimum performance



**POWER**  
BL™ Motor delivers 8,500 RPM



FEATURES

- The BL™ Brushless Motor eliminates carbon brushes, enabling the BL™ Motor to run cooler and more efficiently for longer life; delivers 8,500 RPM
- Efficient BL™ Brushless motor is electronically controlled to optimize battery energy use for up to 50% longer run time per charge
- The electronically-controlled BL™ Brushless Motor efficiently uses energy to match torque and RPM to the changing demands of the application
- Extreme Protection Technology (XPT™) is engineered for improved dust and water resistance for operation in harsh conditions
- Compact and ergonomic design at only 14-1/4" long
- Weighs only 5.2 lbs. with battery for reduced operator fatigue
- Rubberized soft grip provides increased comfort on the job
- Anti-restart function, soft start

SPECIFICATIONS

Grinding wheel	5"
No load speed	8,500 RPM
Lock-on switch	Yes
Lock-off	Yes
Grinder switch type	Slide Switch
Battery	18v LXT® Lithium-Ion
Overall length	14-1/4"
Net weight	5.2 lbs.
UPC code DGA456RFE	088381- 814287

STANDARD EQUIPMENT

- 18v LXT® Cordless 5" angle grinder, tool only (DGA506Z)
- Side handle (158337-4)

OPTIONAL ACCESSORIES

- 18v Lithium-Ion Dual Port Rapid Optimum charger (DC18RD)
- 18v Lithium-Ion 4-port charger (DC18SF)
- 18v Compact Lithium-Ion 2.0Ah battery (BL1820)
- 18v LXT® Lithium-Ion 4.0Ah battery (BL1840)
- 18v LXT® Lithium-Ion 5.0Ah battery (BL1850)
- 5" Grinding wheel (A-95962)
- 5" Thin cut-off wheel (B-12647)