



12v max CXT™ Lithium-Ion Brushless Cordless 3/8" Driver-Drill Kit

Model DF332DWAE / DF332DZ

COMPACT BRUSHLESS AND ERGONOMIC DESIGN



DESIGN

Compact and ergonomic design at only 6-1/16" long



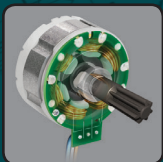
ERGONOMICS

Ergonomically designed handle with rubberized soft grip provides increased comfort



COMFORT

Weighs only 2.3 lbs. with battery for reduced operator fatigue



TECHNOLOGY

The BL™ Motor eliminates carbon brushes, enabling the BL Motor to run cooler and more efficiently



Also available as bare tool
Model DF332DZ



BRUSHLESS



FEATURES

- Mechanical 2-speed transmission (0-450 & 0-1,500 RPM) for a wide range of drilling and driving applications
- 12v max CXT™ slide battery design enables the tool to stand on its own for user convenience
- Ergonomically designed handle with rubberized soft grip provides increased comfort
- BL™ Brushless Motor delivers 280 in.lbs. of Max Torque
- Efficient BL™ Brushless motor is electronically controlled to optimize battery energy use for up to 50% longer run time per charge
- Built-in L.E.D. light illuminates the work area
- Ideal for work in tight spaces
- 3-year limited warranty on tool, battery and charger
- Only use genuine Makita batteries and chargers

SPECIFICATIONS

Capacity	
steel	3/8"
wood	1-1/8"
No load speed (variable 2 speed)	0 - 450 / 0 - 1,500 RPM
Maximum Torque	280 in.lbs.
Battery	12v max Lithium-Ion
Overall length	6-1/16"
Net weight (with battery)	2.3 lbs.
UPC Code DF332DWAE	088381-809436

STANDARD EQUIPMENT

- 12V max CXT™ Driver Drill, Tool Only (DF332D)
- (2) 12v max CXT™ Lithium-Ion 2.0Ah Battery (BL1021B)
- 12v max CXT™ Lithium-Ion Charger (DC10WD)
- Tool case

OPTIONAL ACCESSORIES

- 12v Lithium-Ion 4.0Ah battery (BL1041B)
- 12V max CXT™ Lithium-Ion 1.5Ah Battery (BL1016)
- 12V max CXT™ Fast Charger (DC10SB)