

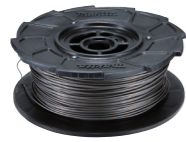


Cordless Rebar Tying Tool DTR181 / DTR180

Accessory

Tie wire set

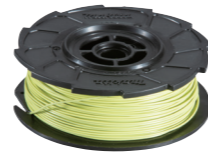
50 pcs/ box
Part No. 199137-9
Annealed wire
(Ø0.8mm)



Part No. 191A57-9
Galvanized wire
(Ø0.8mm)



Part No. 191J59-9
Poly Coated wire
(Ø0.9mm)



Wire guide B

for model DTR181

Part No. 162945-1
Silver
for Annealed wire and Poly Coated wire
Standard Equipment

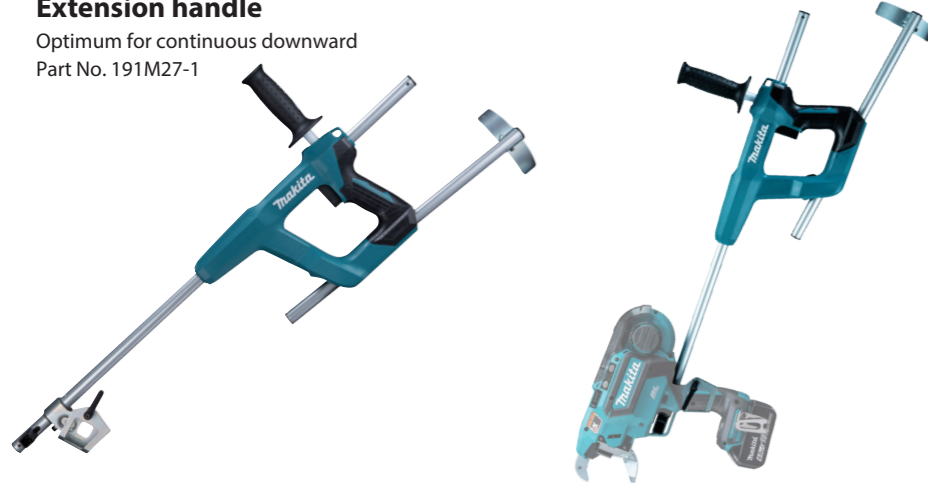


Part No. 1911H9-6
Black
for Annealed wire and Galvanized wire

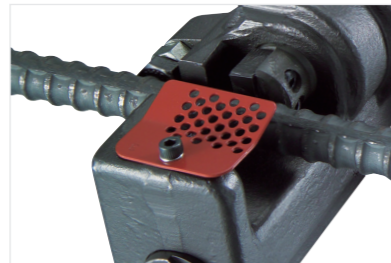


Extension handle

Optimum for continuous downward
Part No. 191M27-1



Cordless Steel Rod Cutter



Protector
Protector prevents that cut pieces may fly off.



Cutting head rotates 360° to accommodate different cutting positions

Charging Time

Model	Fast Charging	
	DC18RC	DC18SD
BL1815N 1.5Ah	15 min	30 min
BL1820B 2.0Ah	24 min	45 min
BL1830B 3.0Ah	22 min	60 min
BL1840B 4.0Ah	36 min	90 min
BL1850B 5.0Ah	45 min	110 min
BL1860B 6.0Ah	55 min	130 min

Cordless Rebar Tying Tool

DTR181 / DTR180

	DTR181	DTR180
Torque Setting 6	Tie Wire Dia. 0.8 mm	Tie Wire Dia. 0.8 mm
Carrying Case	Applicable Rebars D16 x D16 - [D13 x 2] x [D16 x 2]	Applicable Rebars D10 x D10 - [D13 x 2] x [D13 x 2]
	Vibration Level 2.5 m/s ² or less	Vibration Level 2.5 m/s ² or less
	Sound Pressure Level 82 dB(A)	Sound Pressure Level 78 dB(A)
	Dimensions (L x W x H) w/ BL1815N / BL1820B: 317 x 93 x 301 mm (12-1/2 x 3-5/8 x 11-7/8")	Dimensions (L x W x H) w/ BL1815N / BL1820B: 304 x 93 x 301 mm (12 x 3-2/3 x 11-7/8")
	w/ BL1830B / BL1840B / BL1850B / BL1860B: 317 x 93 x 318 mm (12-1/2 x 3-5/8 x 12-1/2")	w/ BL1830B / BL1840B / BL1850B / BL1860B: 304 x 93 x 318 mm (12 x 3-2/3 x 12-1/2")
	Net weight 2.4 - 2.7 kg (5.3 - 6.0 lbs.)	Net weight 2.3 - 2.6 kg (5.1 - 5.7 lbs.)
	Standard Equipment: Nylon brush (DTR181 only), Hex Wrench, Hook	

The weight may differ depending on the attachment(s), including the battery cartridge.
The lightest and heaviest combination, according to EPTA-Procedure 01/2014, are shown in the table.
Items of standard equipment and specifications may vary by country or area.



photo: DTR181

DTR181

Max tying capacity
Combination of 4 rebars
D16 (#5) x 2 x D13 (#4) x 2



DTR180

Max tying capacity
Combination of 4 rebars
D13 (#4) x 2 x D13 (#4) x 2



Makita Corporation

3-11-8 Sumiyoshi-cho, Anjo, Aichi, 446-8502 Japan

PRINTED IN JAPAN 202207

Tying rebar automatically



photo: DTR181

Tying capacity

DTR181

Applicable rebars:

D13 x D13 - (D16 x 2) x (D13 x 2)

X	2 pcs of rebars					X	3 pcs of rebars			X	4 pcs of rebars	
	D13 (#4)	D16 (#5)	D19 (#6)	D22 (#7)	D25 (#8)		D10 (#3) x 2	D13 (#4) x 2	D16 (#5) x 2		D10 (#3) x 2	D13 (#4) x 2
D13(#4)	△	△	✓	✓	✓	D10(#3)	△	✓	✓	D10(#3) x 2	✓	✓
D16(#5)	△	✓	✓	✓	✓	D13(#4)	△	✓	✓	D13(#4) x 2	✓	✓
D19(#6)	✓	✓	✓	✓	✓	D16(#5)	✓	✓	✓	D16(#5) x 2	✓	✓
D22(#7)	✓	✓	✓	✓	✓	D19(#6)	✓	✓	✓	D19(#6) x 2	✓	✓
D25(#8)	✓	✓	✓	✓	—	D22(#7)	✓	✓	✓	D22(#7) x 2	✓	✓
D29(#9)	✓	✓	✓	—	—	D25(#8)	✓	✓	✓	D25(#8) x 2	✓	✓
D32(#10)	✓	✓	—	—	—							
D35(#11)	✓	—	—	—	—							

△ The combination is not designed for high tying strength.

DTR180

Applicable rebars:

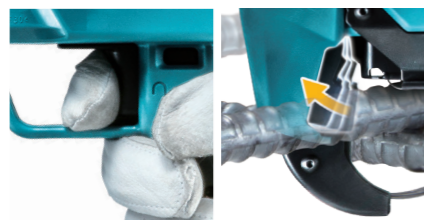
D10 x D10 - (D13 x 2) x (D13 x 2)

X	2 pcs of rebars			X	3 pcs of rebars		X	4 pcs of rebars	
	D10 (#3)	D13 (#4)	D16 (#5)		D10 (#3) x 2	D13 (#4) x 2		D10 (#3) x 2	D13 (#4) x 2
D10(#3)	✓	✓	✓	D10(#3)	✓	✓	D10(#3) x 2	✓	✓
D13(#4)	✓	✓	✓	D13(#4)	✓	✓	D13(#4) x 2	✓	✓
D16(#5)	✓	✓	✓	D16(#5)	✓	—			

(# means perimeter length: cm)

Continuous actuation mode

Hold the trigger and pull the contact plate against rebars



Selectable 2-Modes



Single actuation
↕
Continuous actuation

6-stage adjustable tying strength



Tying strength can be adjusted to suit the combination of rebars simply by operating the panel located above the battery.

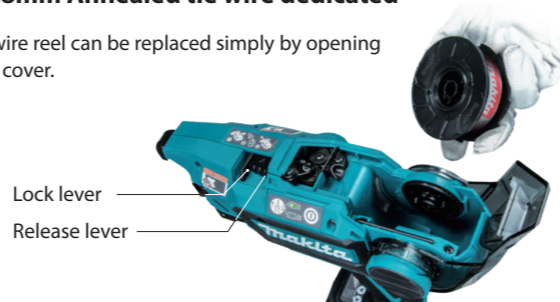
Easy to load with tie wire reel

- 1 Push the release lever
- 2 Put a reel and pass a wire through the hole
- 3 Release the lock lever



Ø0.8mm Annealed tie wire dedicated

Tie wire reel can be replaced simply by opening Reel cover.



Powered by 18V LXT Li-Ion battery



Tying times per 1 charge (Battery: BL1860B)

DTR181
D16 x 2, 2pcs of rebars
about **5,000** times

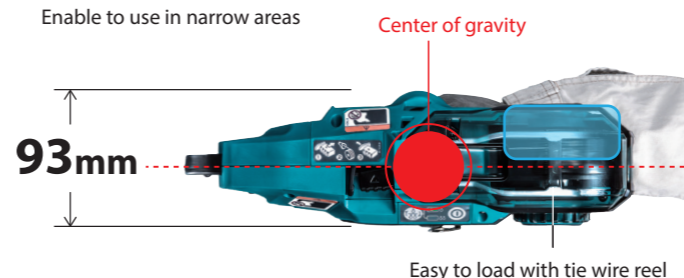
DTR180
D13 x 2, 2pcs of rebars
about **6,400** times



BL motor specially used for twisting tie wire

Compact and slim design

Enable to use in narrow areas



eXtreme Protection Technology

Enhanced dust and drip-proof performance for use in bad weather